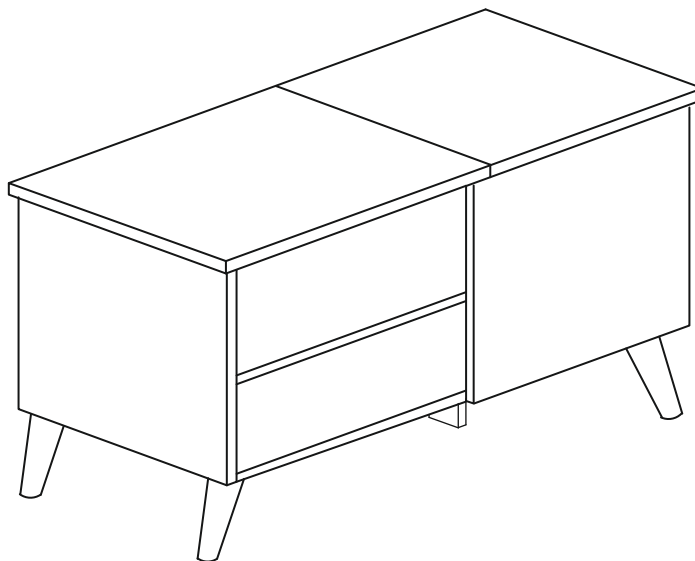


WHITE OAK / STONE EFFECT
ASPEN COFFEE TABLE
ASSEMBLY INSTRUCTIONS



FOR DOMESTIC USE ONLY
IMPORTANT

PLEASE READ BEFORE YOU CONTINUE FURTHER

THE PRODUCT YOU HAVE PURCHASED WILL GIVE YOU MANY YEARS OF SERVICE IF YOU FOLLOW THE GUIDELINES FOR ITS SAFE ASSEMBLY AND PERIODIC MAINTENANCE AND CLEANING.

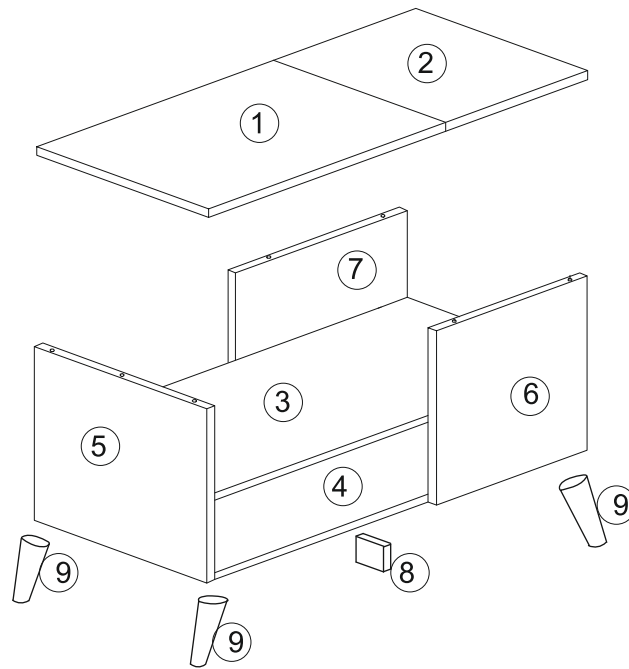
DO NOT USE ANY TOOLS OTHER THAN THOSE SHOWN.

ANY SPANNERS OR ALLEN KEYS REQUIRED ARE INCLUDED WITH THE FITTINGS KIT.

DO NOT FOR ANY REASON USE A POWER TOOL TO ASSEMBLE THIS PRODUCT. ITS USE WILL INVALIDATE ANY CLAIM YOU MAY HAVE AND COULD MAKE THIS PRODUCT UNSAFE.

DEPENDING ON THE AMOUNT OF USE THIS PRODUCT RECEIVES IT MAY BE NECESSARY TO TIGHTEN UP THE FIXINGS FROM TIME TO TIME. THIS IS COMPLETELY NORMAL FOR ANY FLAT PACK FURNITURE.

FOR CLEANING YOU MAY USE A DAMP CLOTH (NOT WET) DRY DUSTER AND NORMAL FURNITURE POLISH.










PLEASE CHECK THAT YOU HAVE ALL THE PARTS LISTED BEFORE YOU START ASSEMBLING. IF YOU DO FIND THAT SOMETHING IS MISSING, DO NOT CONTINUE ASSEMBLY. PLEASE CONTACT YOUR SUPPLIER IMMEDIATELY.

PART LIST

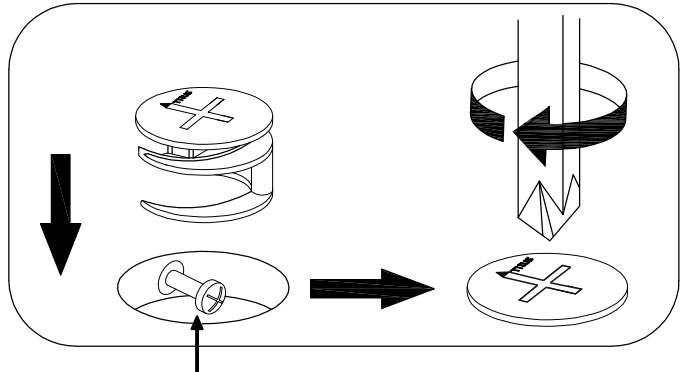
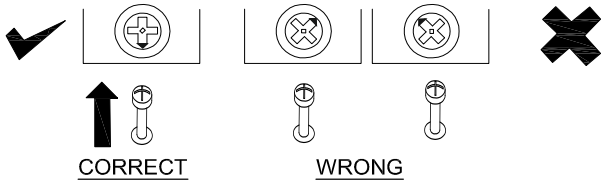
Part Number	Part Code	Part Description	Quantity	Carton
1	S300-301-071-AB1-01	Table Top 'A'	1	1/1
2	S300-301-071-AB1-02	Table Top 'B'	1	1/1
3	S300-301-071-AB1-03	Center Panel	1	1/1
4	S300-301-071-AB1-04	Bottom Panel	1	1/1
5	S300-301-071-AB1-05	Side Panel	1	1/1
6	S300-301-071-AB1-06	Front Panel	1	1/1
7	S300-301-071-AB1-07	Back Panel	1	1/1
8	S300-301-071-AB1-08	Center Leg	1	1/1
9	S300-301-071-AB1-09	Round Leg	4	1/1

HARDWARE LIST

No	Part Name		Qty	Carton
A	Minifix 2 in 1		15 PCS	1
B	CSK M4 x 20mm		16 PCS	1
C	CSK M4 x 25mm		6 PCS	1
D	Wood Dowel M8 x 30mm		9 PCS	1
E	80mm M6 Bolt		1 PC	1
F	Leg Support		4 PCS	1
G	Allen Key		1 PC	1

TIPS FOR FITTING CAM-LOCKS

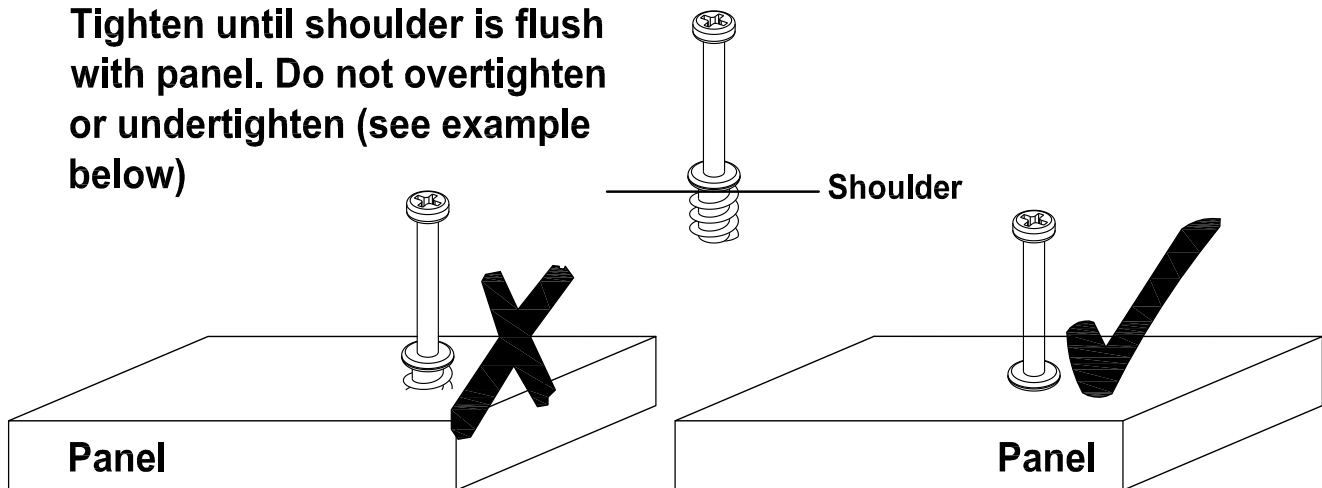
WHEN FITTING CAM-LOCK
ENSURE STARTING POSITION IS CORRECT
BEFORE YOU INSERT CONNECTING CAM BOLT
TURN CLOCKWISE UNTIL SECURE



Cam bolt head needs to be in centre

CAMBOLT

Tighten until shoulder is flush with panel. Do not overtighten or undertighten (see example below)



STEP 1

PARTS REQUIRED

3 - CENTER PANEL x1

4 - BOTTOM PANEL x1

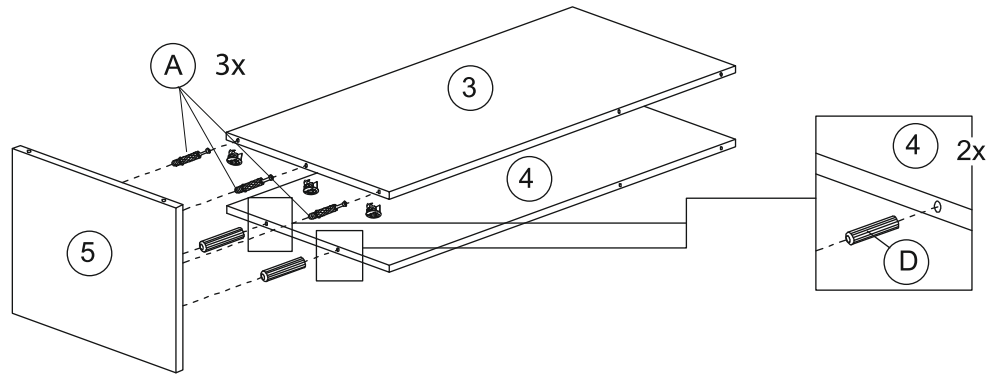
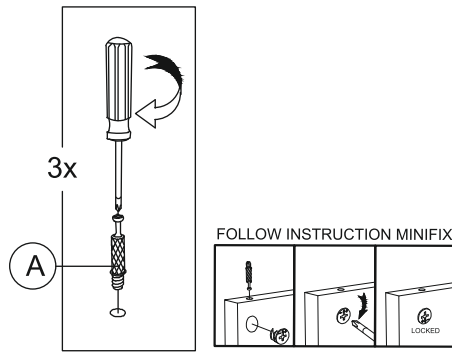
5 - SIDE PANEL x1

HARDWARE REQUIRED

A  03

D  02

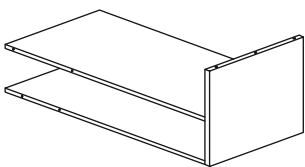
TOOLS REQUIRED



STEP 2

PARTS REQUIRED

7 - BACK PANEL x1

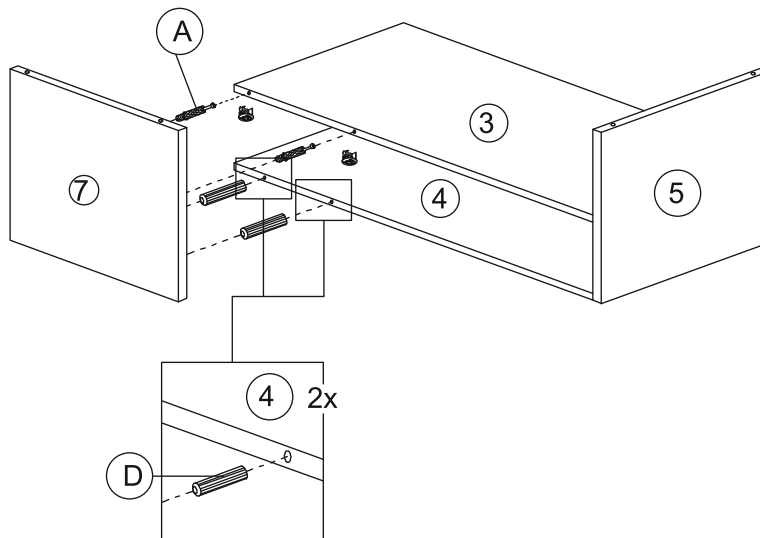
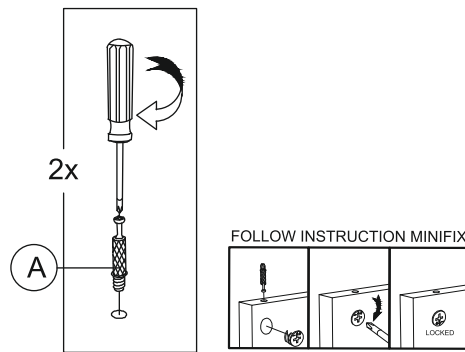
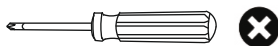


HARDWARE REQUIRED

A  02

D  02

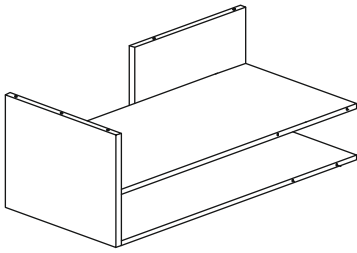
TOOLS REQUIRED



STEP 3

PARTS REQUIRED

6 - FRONT PANEL x1

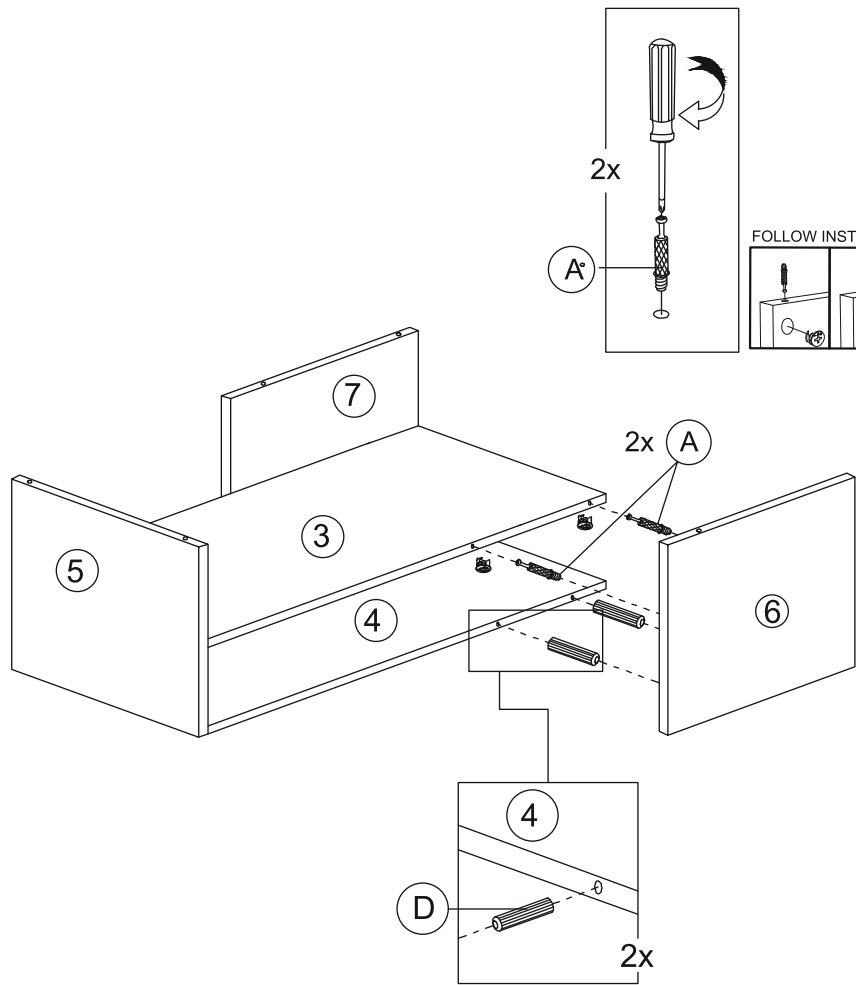


HARDWARE REQUIRED

A  02

D  02

TOOLS REQUIRED



STEP 4

PARTS REQUIRED

1 - TABLE TOP 'A' x1

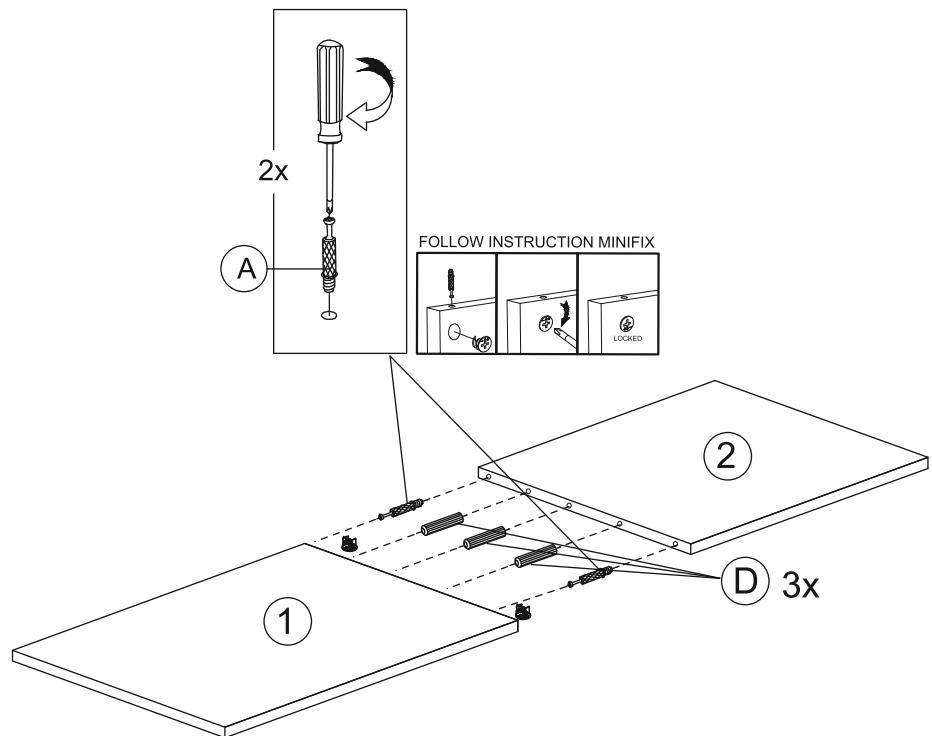
2 - TABLE TOP 'B' x1

HARDWARE REQUIRED

A  02

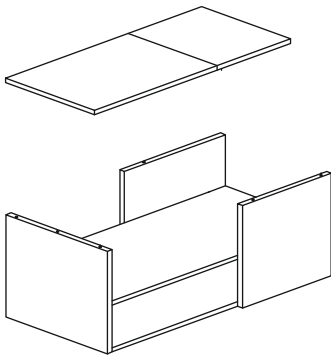
D  03

TOOLS REQUIRED

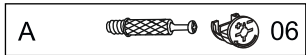


STEP 5

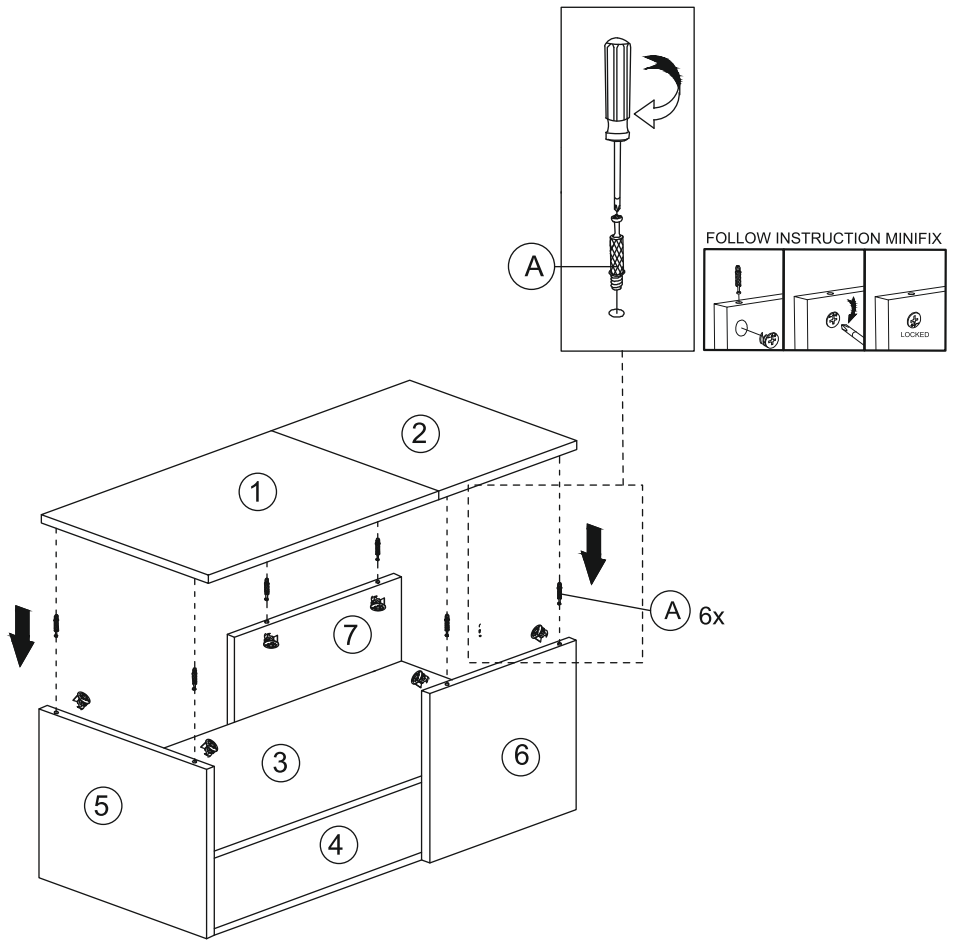
PARTS REQUIRED



HARDWARE REQUIRED

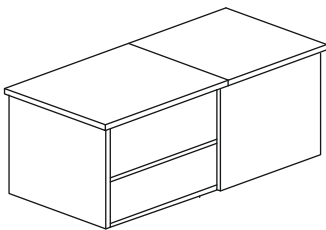


TOOLS REQUIRED

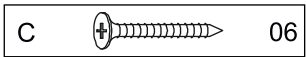


STEP 6

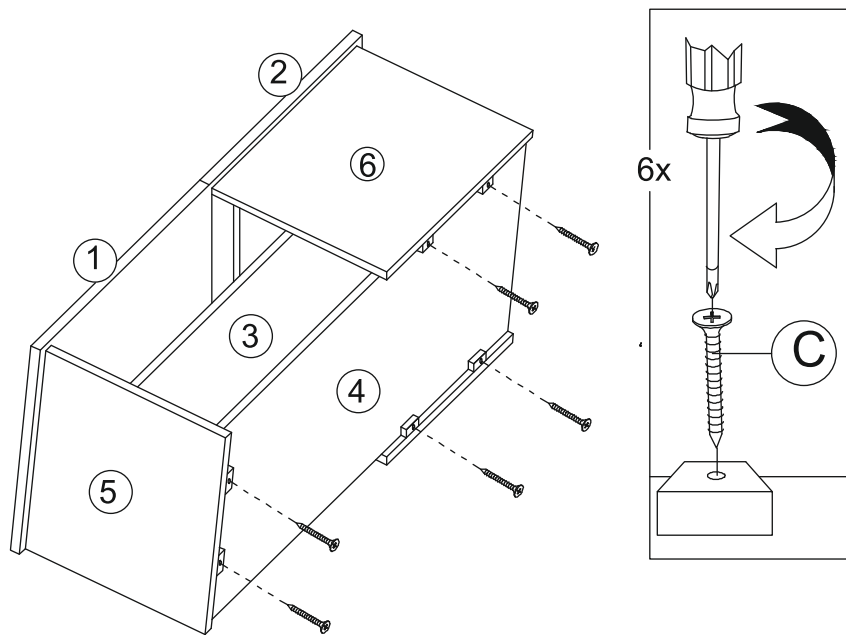
PARTS REQUIRED



HARDWARE REQUIRED

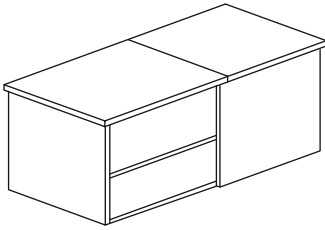


TOOLS REQUIRED



STEP 7

PARTS REQUIRED



8 - CENTER LEG SUPPORT x1

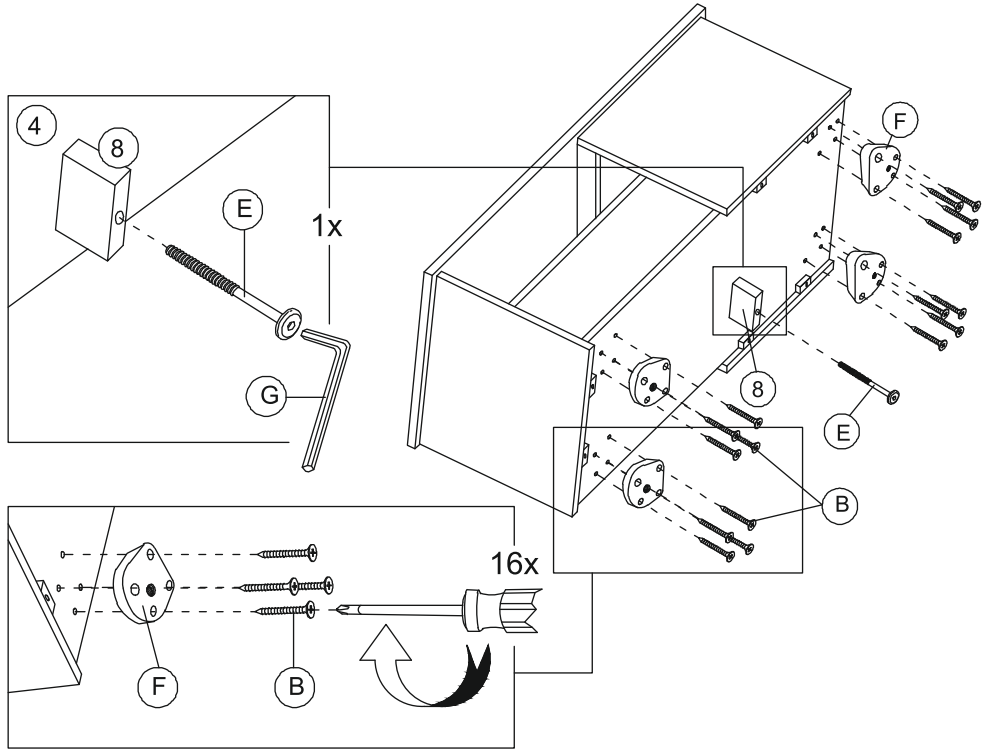
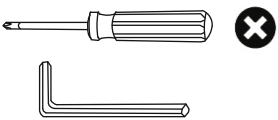
HARDWARE REQUIRED

B  16

E  01

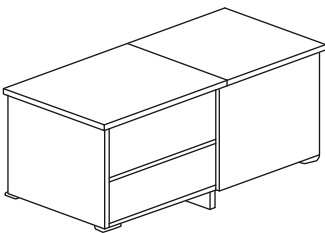
F  04

TOOLS REQUIRED

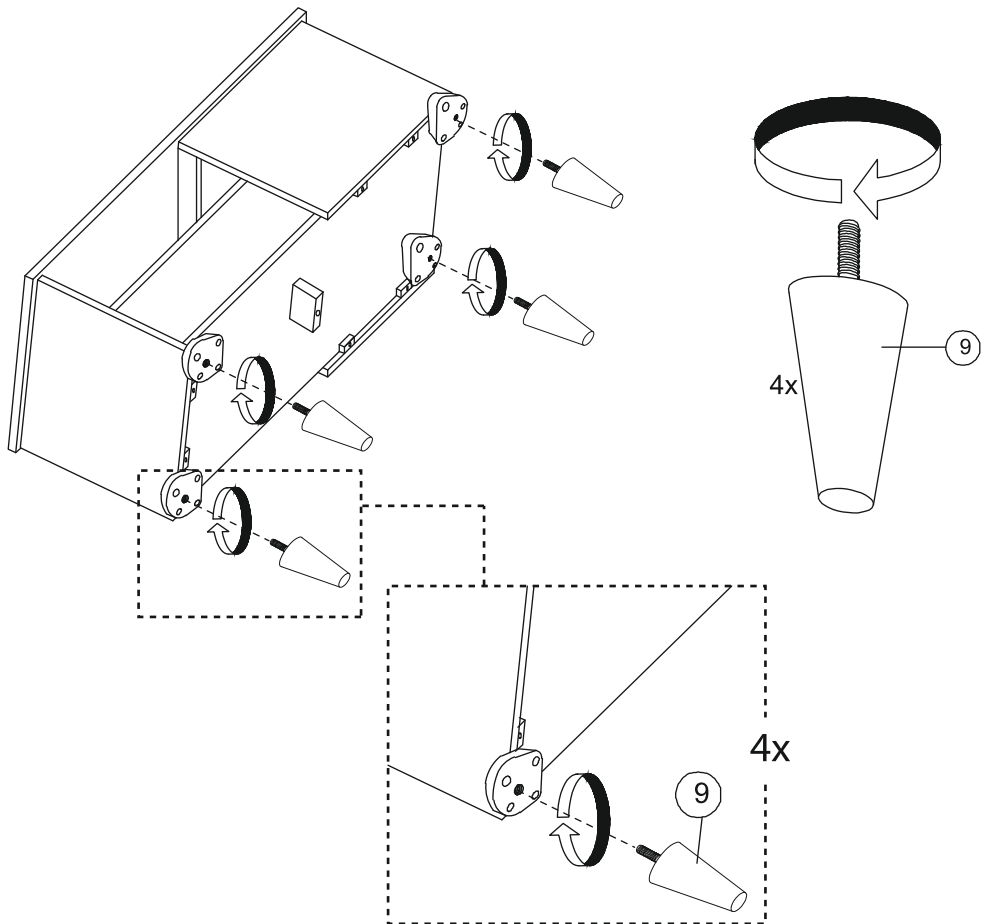


STEP 8

PARTS REQUIRED



9 - ROUND LEG x4



STEP 9

COMPLETE ASSEMBLED

